

Load Frequency Control for Two Area Using Intelligent Control

¹Ali Adil Rafea, ²Dr. Arkan Ahmed Hussein

College of Engineering, Electrical Engineering, Tikrit University, Iraq

alido90hashimy@gmail.com , aalganabe@tu.edu.iq

Article Info

Page Number: 812 - 824

Publication Issue:

Vol 72 No. 1 (2023)

Article History

Article Received: 15 October 2022

Revised: 24 November 2022

Accepted: 18 December 2022

Abstract

The content of our study is to control the loading frequency of two regions using particle swarm optimization (PSO), genetic algorithms (GA), sine cosine algorithms (SCA) and relative integral derivative (PID) algorithms. The traditional PID controller is developed using the optimization algorithms we mentioned earlier and has reduced frequency change and has faster response. Integral Time Absolute Error (ITAE) is the function used in all algorithms for error calculation. The results showed that the algorithms had better results than the traditional method, and the SCA algorithm was also the best among them in terms of response speed.

1. Introduction

The safe production and distribution of electrical energy to multiple customers is the main objective of the electrical system. Population growth, the significant economic activity of recent years, and the need for individual electricity to support increased services and electrical gadgets in homes, workplaces, and industries are the three main causes of this increase in the demand for electricity. These factors increased the need for energy, and the rise in demand must be carefully managed somewhere to prevent it from affecting the rest of the electrical grid. Based on the availability of various consumer appliances, consumers can generally be categorized into three groups: residential, industrial, and commercial. The goal of an electric power system is to deliver electricity to every consumer, regardless of their demands, starting with the efficient generation of electricity. Before stepping down at the user end according to requirements, the initially generated high-voltage electrical energy is transferred at an additional high-voltage range through an appropriate step-up mechanism [1–5].

It is difficult to maintain the frequency at its rated value because consumer power demands are unpredictable. Frequency and power signal oscillations are magnified under dynamic demand situations and the power system may experience undesirable instability issues. The stability and dynamic performance of the power system networks can be significantly improved with the right design of the automatic generation control (AGC) system by dampening the variance in frequency/power signals. The AGC system monitors the tie-line power flow and system frequency, calculates the required increase or decrease in power generation based on changes in consumer demand, and modifies the set position of the speed changer in the control area to keep the time average of area control error (ACE) at a minimal value. As a result, AGC controls ACE to zero, which also affects frequency and tie-line power error. Two control actions, referred to as primary

control and supplementary control, are used in power systems to achieve AGC. The first frequency adjustment is carried out via the primary control, which also has a steady state error. Only the naturally occurring time lags of the governor, turbine, and the system itself serve as a barrier to the response's rapidity. By using a controller to set the frequency error to zero, the supplementary control adjusts the frequency precisely [6]. AGC's main goals are to reduce load variation and maintain preset values for frequency (f) and voltage (V). While the effects of active (P) and reactive (Q) power on frequency and voltage are mixed, the frequency and voltage control problems can be solved individually using the AGC approach [7–11].

Because the electrical grid is interconnected, the (AGC) helps maintain the flow of energy within the boundaries of these interconnection lines. With the shift towards computer-based control systems, a variety of factors can be taken into account, including the majority of economic units, the coordination of unit types, and even device efficiency and network connectivity limitations [12–16].

Various control techniques have been proposed in recent years based on conventional controls to obtain the optimal value of the PID gain. There are many teaching-learning-based optimization (TLBO) methods and techniques for tuning the Fuzzy-PID microcontroller for AGC in multiple regions [17]. PSO has applied for multi-region units from AGC [18]. Improvement of genetic algorithms for AGC in an interconnected energy system [19]. "Bacterial feed (BF) is applied to gain control unit integrated with GRC to improve AGC performance" [20]. "Linear Matrix Inequality (LMI) Control for AGC System" [21]. "Bacterial Foraging (BFA) AGC Algorithm Based on PID" [22]. "Bacterial Feed Optimization Algorithm (BFOA)-An Optimized Fuzzy PI/PID Controller for AGC in Multiple Regions" [23]. AGC using ANN technology [24]. A proportional integral derivative (FPID) fuzzy predictive AGC microcontroller [25]. Negative swarm algorithm (SSA) for PID controller tuning [26]. Multi-region AGC plot using FOPID (Fuzzy Optimized PID) controller [27]. Implementation of a fuzzy-ordered PID controller to study AGC [28]. Photoelectric, Thermal and Hydrothermal AGC by Capacitor Energy Storage (CES) and Auxiliary Fuzzy PID with Filter (FPIDF- (1 + PI)) Microcontroller [29]. This work makes a comparison of four PID gain tuning techniques to ensure that the problems of frequency deviation due to load change or sudden lift are solved, and also to maintain the stability of the electrical system to maintain the power flow.

2. Formulation of the Problem

The two area thermal-hydro power system biased on "PID- controller to improve the stability.

3. Various Components Mathematical Modelling:

3.1 Generator Model

By applying the swing equation of the small "synchronous machine"

Deviation in speed

$$\frac{d\Delta\omega}{dt} = \frac{1}{2H} (\Delta P_m - \Delta P_e)$$

By taking Laplace to the equation

$$\Delta\Omega = \frac{1}{2H_s} [\Delta P_m(s) - \Delta P_e(s)]$$

3.2 Loading Model

Is approximated by:

$$\Delta P_e = \Delta P_L + D\Delta_w$$

Where (ΔP_L) is the change of the frequency insensitive load, and (Δ_w) is the change of the frequency sensitive load. (D) Is expressed as the percentage change in load divided by the percentage change in frequency.

3.3 Governor

By shifting the hydraulic booster (ΔP_g) to the position of the steam valve (ΔP_V) we have the following:

$$\Delta P_V(s) = \frac{1}{1 + T_g} \Delta P_g(s)$$

3.4 Turbine Model

There are different types of turbines used we remind them:

None reheat turbine

$$\frac{\Delta P_m(s)}{\Delta P_V(s)} = \frac{1}{1 + T_t S}$$

Reheat turbines

$$\frac{\Delta P_m(s)}{\Delta P_V(s)} = \frac{cT_r s + 1}{(1 + T_t S)(1 + T_r S)}$$

Hydro turbines

The hydro turbine transmission function is:

$$\frac{\Delta P_w(s)}{\Delta P_V(s)} = \frac{1 - s T_w}{1 + 0.5 s T_w}$$

4. System Control Equation

$$\frac{\Delta P_w(s)}{\Delta P_V(s)} = \frac{K_D S^2 + K_P S + K_I}{K_D S^2 + S \left(K_P + \frac{f}{R_2} \right) + K_I}$$

The PID Controller has an Area control Error (ACE) input of the respective regions, the inputs to which they are controlled (u_1, u_2) to factory structure the PID controller as follows:

$$ACE_1 = B\Delta f_1 + \Delta P_{tie12}(1)$$

$$ACE_2 = B\Delta f_2 - \Delta P_{tie12}(2)$$

$$u_1 = K_{p1} ACE_1 + K_{i1} \int ACE_1 + K_{d1} \frac{d}{dt} (ACE_1) (3)$$

$$u_2 = K_{p2}ACE_2 + K_{i2} \int ACE_2 + K_{d2} \frac{d}{dt} (ACE_2) \quad (4)$$

The ACE is treated as the output control of the AGC system, which detects any mismatch between the power generation side and the load requirements side.

The mathematical unit of the proposed system

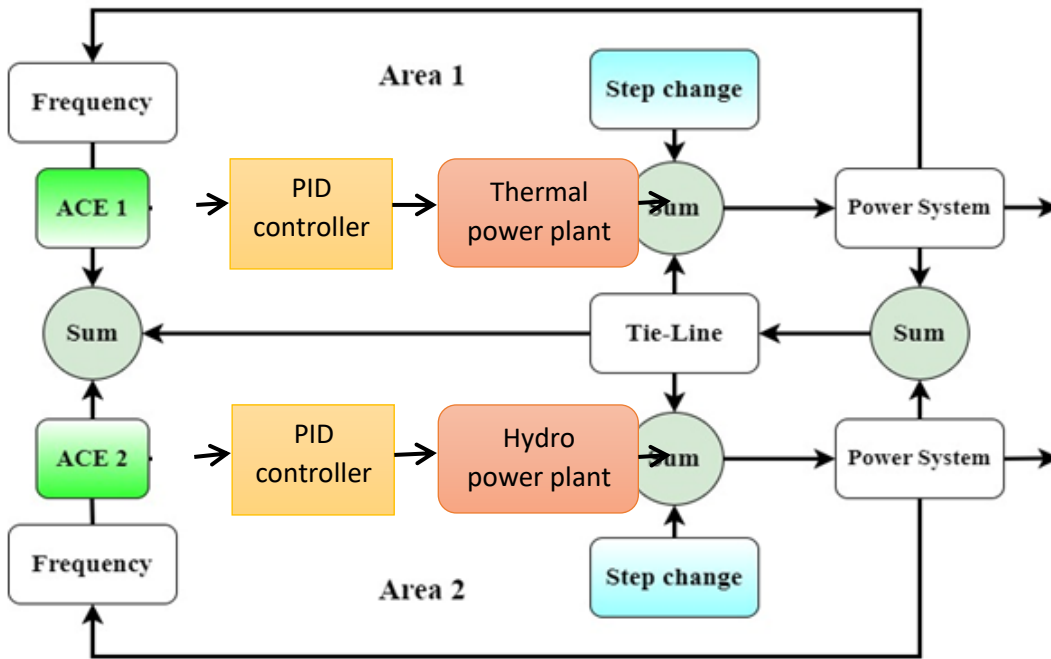


Figure (1) twoareasThermal - Hydropower system

5. Two Area Power System State Space Representations:

State Variables:

$$\Delta x_1 = \frac{1}{1 + sT_g} \Delta x_2 = \frac{K_r T_r s + 1}{1 + sT_r} \Delta x_3 = \frac{1}{1 + sT_t}$$

$$\Delta x_4 = \frac{1}{1 + sT_1} \Delta x_5 = \frac{1 + sT_3}{1 + sT_2} \Delta x_6 = \frac{1 - s T_w}{1 + 0.5 s T_w}$$

Variable inputs for control:

u_1 And u_2

Input variables for disturbances:

$$d_1 = \Delta P_{L1} \quad d_2 = \Delta P_{L2}$$

The state variable is created for thermal area:

$$\dot{x}_i = A_i x_i + \dot{B}_{1i} w_i + B_{2i} u_i \quad (5)$$

$$x_1 = [\Delta f_1 \Delta P_{tie12} \quad \Delta E \quad \Delta x_1 \quad \Delta x_2 \quad \Delta x_3]^T$$

$$w_1 = [\Delta P_{L1} \quad \Delta f_2]^T$$

$$U_1 = u_1$$

$$A_1 = \begin{bmatrix} -\frac{1}{T_p} & -\frac{K_p}{T_p} & 0 & 0 & 0 & \frac{K_p}{T_p} \\ 2\pi T_{12} & 0 & 0 & 0 & 0 & 0 \\ \beta_1 & 1 & 0 & 0 & 0 & 0 \\ -\frac{1}{T_g * R_1} & 0 & 0 & -\frac{1}{T_g} & 0 & 0 \\ -\frac{K_r}{T_g * R_1} & 0 & 0 & \frac{1}{T_r} - \frac{K_r}{T_g} - \frac{1}{T_r} & 0 & 0 \\ 0 & 0 & 0 & 0 & \frac{1}{T_t} - \frac{1}{T_t} & 0 \end{bmatrix}$$

$$B_{11} = \begin{bmatrix} 0 & -\frac{K_p}{T_p} \\ -2\pi T_{12} & 0 \\ 0 & 0 \\ 0 & 0 \\ 0 & 0 \\ 0 & 0 \end{bmatrix} \quad B_{21} = \begin{bmatrix} 0 \\ 0 \\ 0 \\ 1 \\ \frac{1}{T_g} \\ \frac{K_r}{T_g} \\ 0 \end{bmatrix}$$

The state variable is created for hydro area:

$$x_2 = [\Delta f_2 \quad \Delta P_{tie12} \quad \Delta E \quad \Delta x_4 \quad \Delta x_5 \quad \Delta x_6]^T$$

$$w_1 = [\Delta P_{L2} \quad \Delta f_1]^T$$

$$U_2 = u_2$$

$$A_2 = \begin{bmatrix} -\frac{1}{T_{p2}} & -\frac{K_{p2}}{T_{p2}} & 0 & 0 & 0 & 0 & \frac{K_{p2}}{T_{p2}} \\ 2\pi T_{12} & 0 & 0 & 0 & 0 & 0 & 0 \\ \beta_2 & -1 & 0 & 0 & 0 & 0 & 0 \\ -\frac{1}{T_1 * R_2} & 0 & 0 & -\frac{1}{T_1} & 0 & 0 & 0 \\ -\frac{2}{T_3 R_2 T_1} & 0 & 0 & \frac{1}{T_3} - \frac{T_2}{T_3 T_1} & -\frac{1}{T_3} & 0 & 0 \\ -\frac{2T_2}{T_3 R_2 T_1} & 0 & 0 & \frac{-2}{T_3} + \frac{2T_2}{T_3 T_1} \frac{2}{T_w} + \frac{2}{T_3} & -\frac{2}{T_w} & 0 & 0 \end{bmatrix}$$

$$B_{12} = \begin{bmatrix} 0 & -\frac{K_{p2}}{T_{p2}} \\ 2\pi T_{12} & 0 \\ 0 & 0 \\ 0 & 0 \\ 0 & 0 \\ 0 & 0 \end{bmatrix} \quad B_{22} = \begin{bmatrix} 0 \\ 0 \\ 0 \\ 1 \\ \frac{T_2}{T_1} \\ \frac{2T_2}{T_3 T_1} \\ -\frac{2}{T_3 T_1} \end{bmatrix}$$

6. Control System

In fact, there are many optimization methods used in designing PID controllers for LFC targets. So we will use three different optimization algorithms used in this research which are (PSO), (GA) and (SCA).

6.1 Particle Swarm Optimization (PSO)

Particle swarm optimization (PSO) was originated by James Kennedy and R.C. Eberhard in 1995. It is a stochastic evolutionary computation method. This method is based on the swarm theory, as the bird has always looked for the shortest way to find food. Figure 2 shows the PSO algorithm [30].

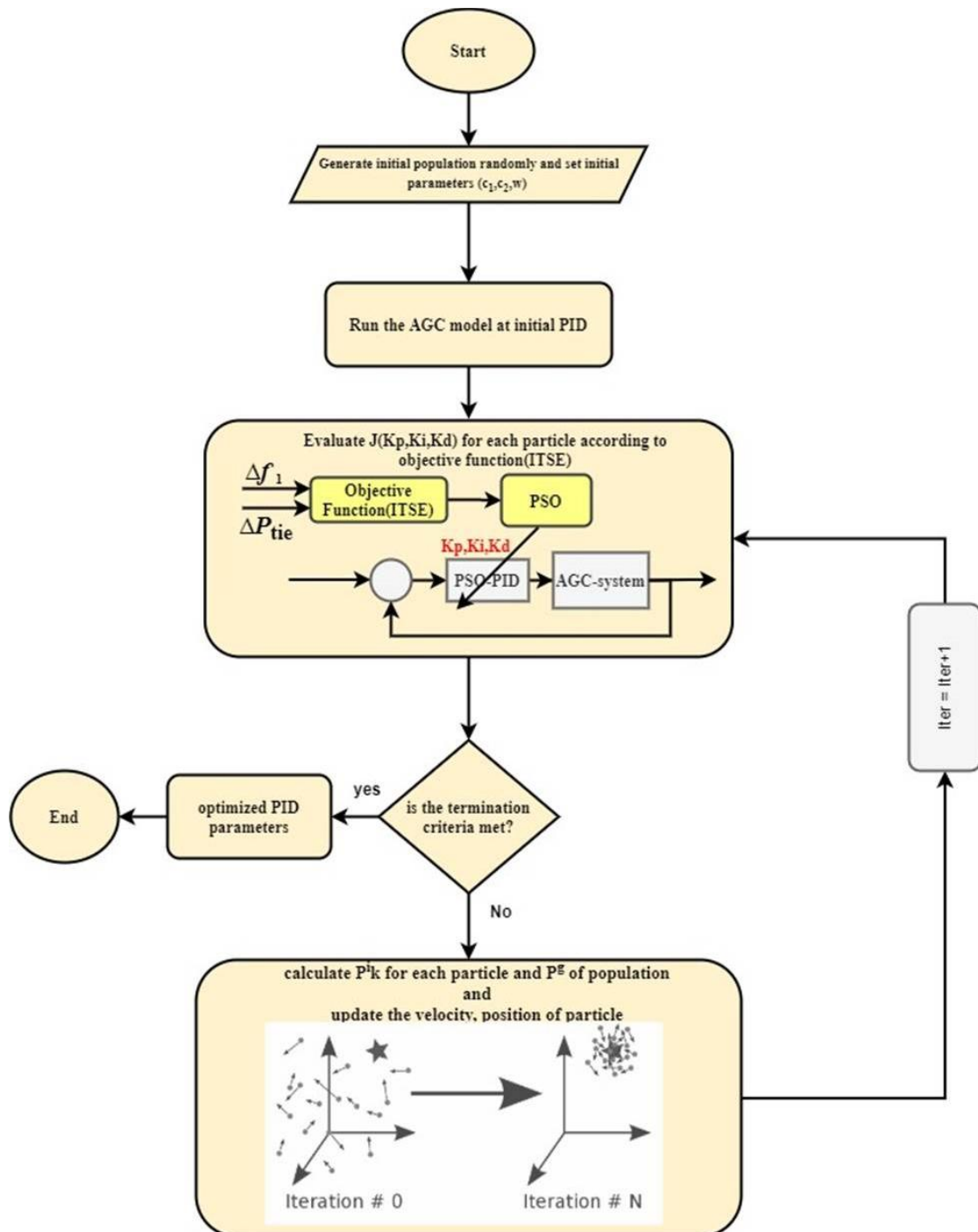


Figure (2)a flow chart showing the particle swarm

6.2 Genetic Algorithms (GA)

Genetic algorithm is an algorithm taken from Darwin's idea in nature. It is a method that starts without clear or complete information, but is based on experience and selectivity. In other words, he selects the best traits from the existing ones and tries to transfer and develop them by finding the species that have the best genes taken. Figure 3 shows the GA algorithm [31].

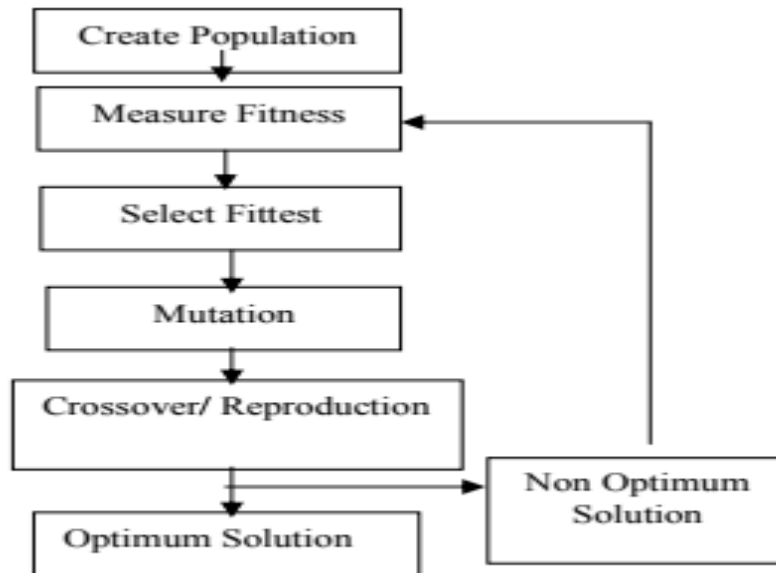


Figure (3) a diagram of the genetic algorithm scheme

6.3 Sine Cosine Algorithms

The SCA generates many candidate and re-random initial solutions they seek to find the best solutions by using a mathematical model using sine and cosine functions. This algorithm also includes a number of variables that take random values and that can adapt to increase the possibilities and find search places in different stages of optimization. First, the exploration, exploitation, local optimization avoidance, and SCA convergence are tested using a collection of well-known test cases that includes Unimodal, Multimodal, and Composite functions. Second, a number of performance indicators are employed to track and validate the SCA's effectiveness on the transferred 2D test functions, including lookup history, path, average fit of solutions, and best solution during optimization. A demanding case study to verify and perform is optimization of the aircraft wing cross section by SCA [32]. The presentation devil puts this algorithm in the following update situations are proposed in this work for the two follow-up phases:

$$X_i^{t+1} = X_i^t + r_1 \times \sin(r_2) \times |r_3 P_i^t - X_i^t| \quad (6)$$

$$X_i^{t+1} = X_i^t + r_1 \times \cos(r_2) \times |r_3 P_i^t - X_i^t| \quad (7)$$

where P_i is the location of the destination point in the $i - th$ dimension, X_i^t is the position of the current solution in the $i - th$ dimension at the $t - th$ iteration, r_1 , r_2 , and r_3 are random values, and $||$ denotes the absolute value. The following is how these two equations are combined:

$$X_i^{t+1} = \begin{cases} X_i^{t+1} = X_i^t + r_1 \times \sin(r_2) \times |r_3 P_i^t - X_i^t| & r_4 < 0.5 \\ X_i^{t+1} = X_i^t + r_1 \times \cos(r_2) \times |r_3 P_i^t - X_i^t| & r_4 \geq 0.5 \end{cases} \quad (8)$$

Where r_4 is random number in $[0, 1]$

The equations above demonstrate that there are four primary parameters in SCA. The parameter r_1 determines the region of the subsequent location (or the direction of travel, which may be between or outside the solution) as r_1, r_2, r_3 and r_4 . The option provides the r_2 distance up to or past the animation's finish line. To highlight whether the destination affects distance determination by random ($r_3 > 1$) or de-emphasis ($r_3 < 1$) means, the parameter gives r_3 a random weight for your destination. Last but not least, the parameter alternates between the sine and cosine parts of the equation. (8).

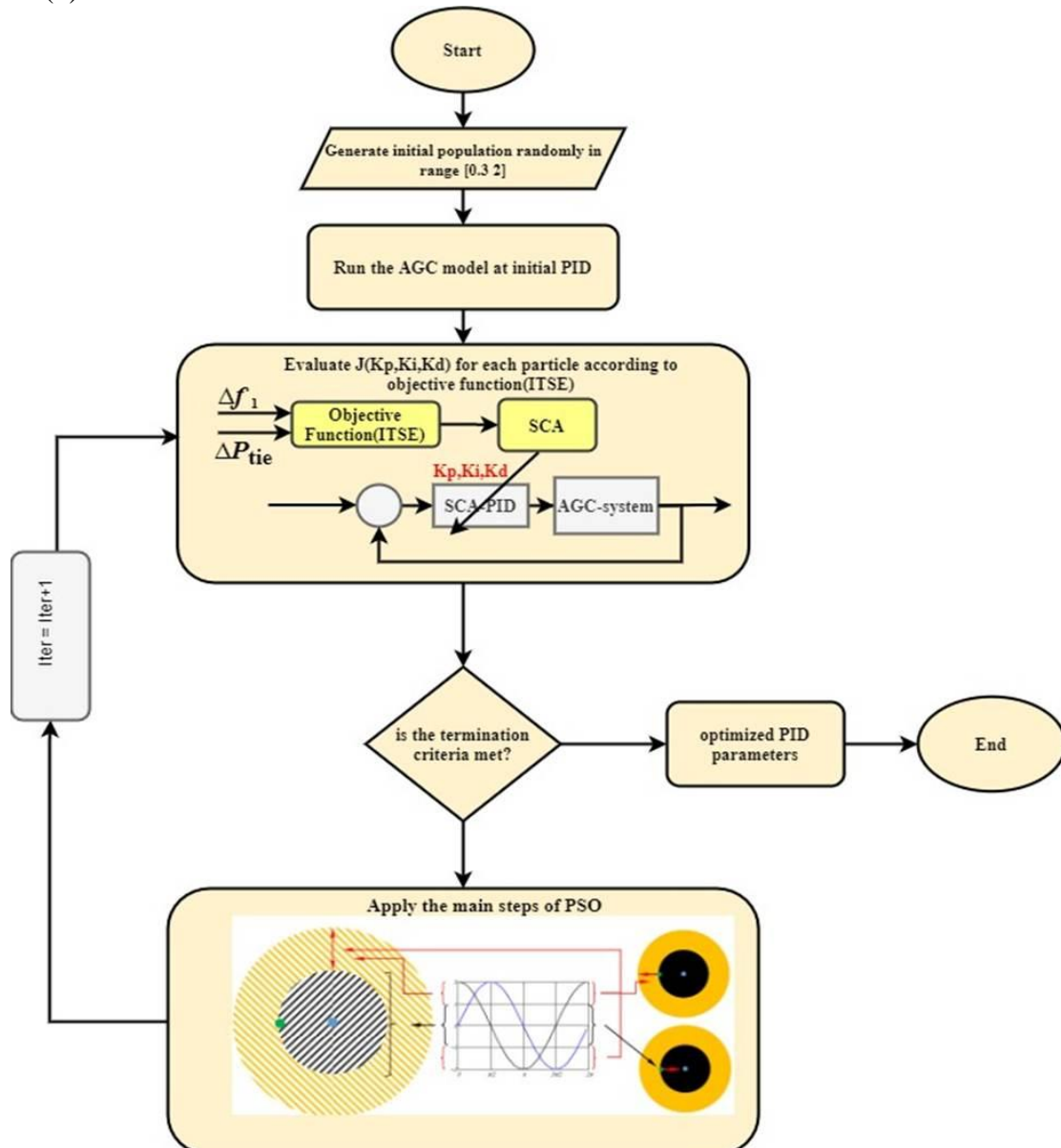


Figure (4) a schematic diagram of the cosine algorithm

7. Simulations and Results

In this paper, a two area energy system was used. Hydraulic and thermal power plants were used. Where the work was designed on the MATLAB program, where the disturbance of the load was displayed on the region in which the thermal reheating is located only, and the waves generated

in each region were drawn, as well as generated on the line connecting the two regions, as shown in the figure. From (5-7) the values were as shown in Table No. (1).

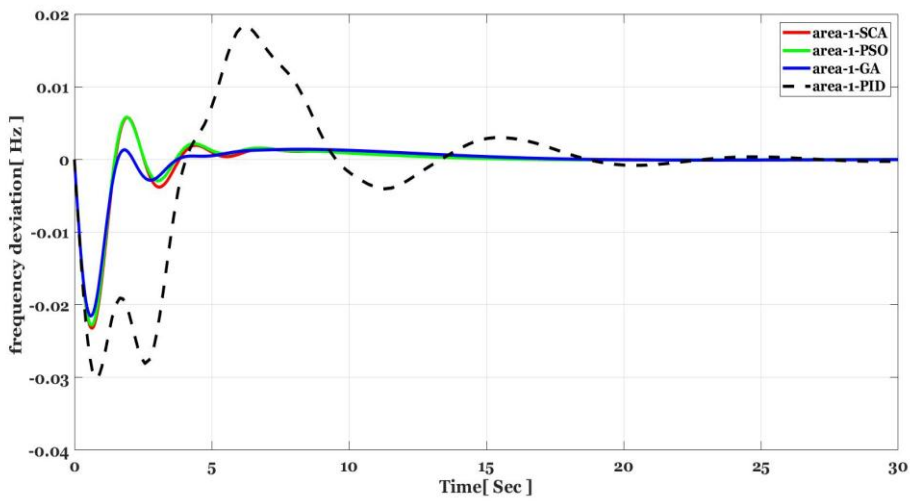


Figure (5) Frequency deviations for region 1

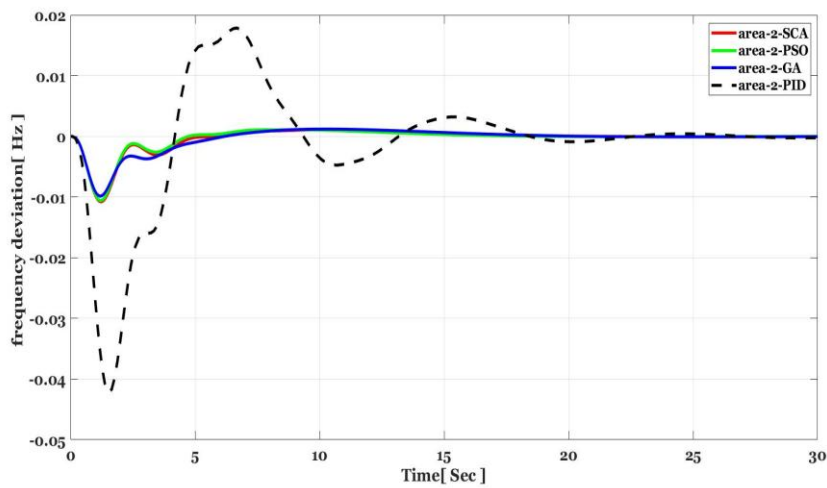


Figure (6) Frequency deviations for region 2

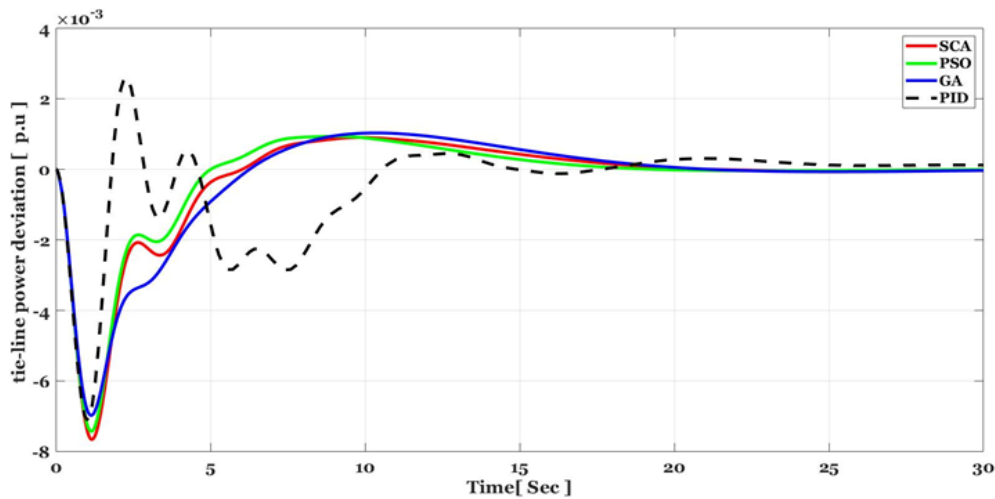


Figure (7) Deviations of the frequency of the tie line

Table No. (1) Comparative performance of time control and goal deficit

control	settling time			Overshoot		
	ΔF_1	ΔF_2	$\Delta_{tie} f$	ΔF_1	ΔF_2	$\Delta_{tie} f$
PID	17,845	20,401	24,712	0.01832	0.01786	0.002582
GA	17.77	18,831	19,977	0.00140	0.001197	0.001027
SCA	11,870	16,974	17,262	0.007238	0.001109	0.001446
PSO	12,971	17,953	13,559	0.00651	0.001013	0.009387

8. Conclusions

In this paper, three different algorithms have been used in addition to the traditional method to obtain the best PID coefficients to solve the frequency perturbation problem. The algorithms applied are SCA, PSO and GA on a two-zone system. By observing the table of results we got from the graphics (5-7) we found that there is a high convergence between the SCA and PSO algorithms. For a comparison of the best of all, we found the SCA algorithm to be the fastest way to reach stability.

Reference

- [1] Guha, Dipayan, Provas Kumar Roy, and Subrata Banerjee. "Study of dynamic responses of an interconnected two-area all thermal power system with governor and boiler nonlinearities using BBO." *Proceedings of the 2015 Third International Conference on Computer, Communication, Control and Information Technology (C3IT)*. IEEE, 2015.
- [2] Oleiwi, Ahmed Oday, and Ahmed Jasim Sultan. "AGC of Hydro-Thermal Power Systems Using Sine Cosine Optimization Algorithm." *2021 3rd International Conference on Electrical, Control and Instrumentation Engineering (ICECIE)*. IEEE, 2021..
- [3] Sahu, Rabindra Kumar, Tulasichandra Sekhar Gorripotu, and Sidhartha Panda. "Automatic generation control of multi-area power systems with diverse energy sources using teaching learning based optimization algorithm." *Engineering Science and Technology, an International Journal* 19.1 (2016): 113-134.

- [4] Simhadri, Kumaraswamy, Banaja Mohanty, and U. Mohan Rao. "Optimized 2DOF PID for AGC of multi-area power system using dragonfly algorithm." *Applications of Artificial Intelligence Techniques in Engineering*. Springer, Singapore, 2019. 11-22..
- [5] Guha, Dipayan, Provas Kumar Roy, and Subrata Banerjee. "Optimal design of superconducting magnetic energy storage based multi-area hydro-thermal system using biogeography based optimization." 2014 Fourth International Conference of Emerging Applications of Information Technology. IEEE, 2014.
- [6] P. Dahiya, P. Mukhija, A. R. Saxena, Y. Arya, Comparative performance investigation of optimal controller for AGC of electric power generating system, *Automatika; J. Contr. Measur. Electron.Comput.Communicat.*57 (4) (2016) 902-921.
- [7] Guha, Dipayan, Provas Kumar Roy, and Subrata Banerjee. "Study of dynamic responses of an interconnected two-area all thermal power system with governor and boiler nonlinearities using BBO." *Proceedings of the 2015 Third International Conference on Computer, Communication, Control and Information Technology (C3IT)*. IEEE, 2015.
- [8] Ghasemi-Marzbali, Ali. "Multi-area multi-source automatic generation control in deregulated power system." *Energy* 201 (2020): 117667.
- [9] Oleiwi, Ahmed Oday, and Ahmed Jasim Sultan. "AGC Including ELD and Emission Coordination Using Sine Cosine Algorithm." *Journal of Techniques* 3.3 (2021): 44-56.
- [10] Dahab, Yasser Ahmed, Hussein Abubakr, and Tarek Hassan Mohamed. "Adaptive load frequency control of power systems using electro-search optimization supported by the balloon effect." *IEEE access* 8 (2020): 7408-7422.
- [11] Barisal, A. K. "Comparative performance analysis of teaching learning based optimization for automatic load frequency control of multi-source power systems." *International Journal of Electrical Power & Energy Systems* 66 (2015): 67-77.
- [12] Guha, Dipayan, Provas Kumar Roy, and Subrata Banerjee. "Load frequency control of large scale power system using quasi-oppositional grey wolf optimization algorithm." *Engineering Science and Technology, an International Journal* 19.4 (2016): 1693-1713.
- [13] Sahu, Rabindra Kumar, Sidhartha Panda, and GT Chandra Sekhar. "A novel hybrid PSO-PS optimized fuzzy PI controller for AGC in multi area interconnected power systems." *International Journal of Electrical Power & Energy Systems* 64 (2015): 880-893.
- [14] Arya, Yogendra. "AGC of two-area electric power systems using optimized fuzzy PID with filter plus double integral controller." *Journal of the Franklin Institute* 355.11 (2018): 4583-4617.
- [15] Priyanto, Yun Tonce Kusuma, and Lukman Hendarwin. "Multi objective optimal power flow to minimize losses and carbon emission using Wolf Algorithm." *2015 International Seminar on Intelligent Technology and Its Applications (ISITIA)*. IEEE, 2015.
- [16] Prajapati, Yogesh, et al. "A Comprehensive Survey on Use of Soft Computing and Optimization Techniques for Load Frequency Control." *Journal of Electrical and Electronic Engineering* 8.2 (2020): 64-70.

- [17] Sahu, Binod Kumar, et al. "Teaching–learning based optimization algorithm based fuzzy-PID controller for automatic generation control of multi-area power system." *Applied Soft Computing* 27 (2015): 240-249.
- [18] Sultan, Ahmed Jasim, and NS FALAH. "AGC of multi-area power system based PSO under deregulated conditions." *International Journal of Engineering & Technology* 7.3 (2018): 1446-1452.
- [19] Ahmed Oday Oleiwi, Ahmed Jasim Sultan. "AGC for Multi-Area Interconnected Using Computational Algorithm." *Journal of Hunan University Natural Sciences* 48.8 (2021).
- [20] Dan, Yufang, and Jianwen Tao. "Knowledge worker scheduling optimization model based on bacterial foraging algorithm." *Future Generation Computer Systems* 124 (2021): 330-337.
- [21] Lakshmi, R., and R. Arlene Davidson. "LMI Based Load Frequency Controller Design for a Deregulated Power System with Time Delay." *2021 International Conference on Sustainable Energy and Future Electric Transportation (SEFET)*. IEEE, 2021.
- [22] Kumar, Amit. "Hybrid bacterial foraging enhanced PSO algorithm for load frequency control of hydro-thermal multi-area power system and comparative analysis." *International Journal of Computing and Digital Systems* 9.1 (2020).
- [23] Darvish Falehi, Ali. "Robust and intelligent type-2 fuzzy fractional-order controller-based automatic generation control to enhance the damping performance of multi-machine power systems." *IETE Journal of Research* 68.4 (2022): 2548-2559.
- [24] Sharma, Gulshan, et al. "Integrating layered recurrent ANN with robust control strategy for diverse operating conditions of AGC of the power system." *IET Generation, Transmission & Distribution* 14.18 (2020): 3886-3895.
- [25] Bose, R. Bibin, and D. Jeraldin Auxillia. "A robust predictive feedback FPID controller using elephant herd virtual inertia optimization control algorithm in Islanded microgrid." *International Journal of Numerical Modelling: Electronic Networks, Devices and Fields* 34.5 (2021): e2889.
- [26] Zeng, Fang, and Hongchun Shu. "Memetic salp swarm algorithm-based frequency regulation for power system with renewable energy integration." *Mathematical Problems in Engineering* 2020 (2020).
- [27] Arya, Yogendra. "AGC of restructured multi-area multi-source hydrothermal power systems incorporating energy storage units via optimal fractional-order fuzzy PID controller." *Neural Computing and Applications* 31.3 (2019): 851-872.
- [28] Fathy, Ahmed, Ahmed M. Kassem, and Almoataz Y. Abdelaziz. "Optimal design of fuzzy PID controller for deregulated LFC of multi-area power system via mine blast algorithm." *Neural Computing and Applications* 32.9 (2020): 4531-4551.
- [29] Arya, Yogendra. "AGC of PV-thermal and hydro-thermal power systems using CES and a new multi-stage FPIDF-(1+ PI) controller." *Renewable energy* 134 (2019): 796-806.
- [30] Marini, Federico, and Beata Walczak. "Particle swarm optimization (PSO). A tutorial." *Chemometrics and Intelligent Laboratory Systems* 149 (2015): 153-165.
- [31] Mirjalili, Seyedali. "Genetic algorithm." *Evolutionary algorithms and neural networks*. Springer, Cham, 2019. 43-55.

- [32] Mirjalili, Seyedali. "SCA: a sine cosine algorithm for solving optimization problems." *Knowledge-based systems* 96 (2016): 120-133.